



UPHOLSTERY & HEAVY WEIGHT

DREAMCLOTH OYSTER

Dreamcloth is a very heavy soft thick linen. Used for soft upholstered furniture, cushions and bedding accessories. This is a premium linen textile with an exceptionally soft and tactile hand.

FABRIC DETAILS

Oyster ,natural cream.

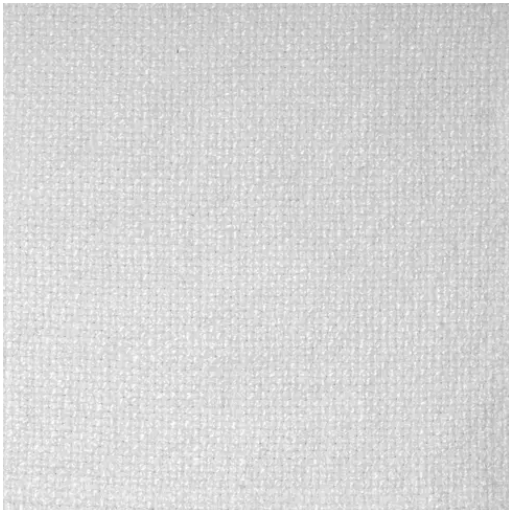
CATEGORY	Upholstery & Heavy Weight
NAME	Dreamcloth
FABRIC COLOUR	Oyster
FABRIC WIDTH:	55"
WEIGHT	40oz/ yard
FIBRE CONTENT	90% Linen, 10% Polyamide
RAILROADABLE	Yes

FABRIC PERFORMANCE

LIGHT FAST	>4
DOUBLE RUBS	25000
OPACITY	opaque

CARE & CLEANING

Dreamcloth can be washed, but due to its weight it is best to wash only smaller pieces, cushion covers, throws, etc. Either hang to dry or a gentle setting in the dryer , remembering to never over heat or overdry your linen in the dryer or else it will shrink! Drycleaning is a definite possibility.



RECOMMENDATIONS

LINING	NA
THREAD	30 to 80 weight Guterman Mara. Upholstery Threads
STITCH LENGTH	between 2.5 to 4 mm.
NEEDLE SIZE	90/14 to 120/19
SEAM	regular seam, topstitched, serged finish.